

Алматы (7273)495-231  
Ангарск (3955)60-70-56  
Архангельск (8182)63-90-72  
Астрахань (8512)99-46-04  
Барнаул (3852)73-04-60  
Белгород (4722)40-23-64  
Благовещенск (4162)22-76-07  
Брянск (4832)59-03-52  
Владивосток (423)249-28-31  
Владикавказ (8672)28-90-48  
Владимир (4922)49-43-18  
Волгоград (844)278-03-48  
Вологда (8172)26-41-59  
Воронеж (473)204-51-73  
Екатеринбург (343)384-55-89

Ижевск (3412)26-03-58  
Иваново (4932)77-34-06  
Иркутск (395)279-98-46  
Казань (843)206-01-48  
Калининград (4012)72-03-81  
Калуга (4842)92-23-67  
Кемерово (3842)65-04-62  
Киров (8332)68-02-04  
Коломна (4966)23-41-49  
Кострома (4942)77-07-48  
Краснодар (861)203-40-90  
Красноярск (391)204-63-61  
Курск (4712)77-13-04  
Курган (3522)50-90-47  
Липецк (4742)52-20-81

Магнитогорск (3519)55-03-13  
Москва (495)268-04-70  
Мурманск (8152)59-64-93  
Набережные Челны (8552)20-53-41  
Нижний Новгород (831)429-08-12  
Новокузнецк (3843)20-46-81  
Ноябрьск (3496)41-32-12  
Новосибирск (383)227-86-73  
Ноябрьск (3496)41-32-12  
Омск (3812)21-46-40  
Орел (4862)44-53-42  
Оренбург (3532)37-68-04  
Пенза (8412)22-31-16  
Петрозаводск (8142)55-98-37  
Псков (8112)59-10-37

Пермь (342)205-81-47  
Ростов-на-Дону (863)308-18-15  
Рязань (4912)46-61-64  
Самара (846)206-03-16  
Саранск (8342)22-96-24  
Санкт-Петербург (812)309-46-40  
Саратов (845)249-38-78  
Севастополь (8692)22-31-93  
Симферополь (3652)67-13-56  
Смоленск (4812)29-41-54  
Сочи (862)225-72-31  
Ставрополь (8652)20-65-13  
Сыктывкар (8212)25-95-17  
Сургут (3462)77-98-35  
Тамбов (4752)50-40-97

Тверь (4822)63-31-35  
Тольятти (8482)63-91-07  
Томск (3822)98-41-53  
Тула (4872)33-79-87  
Тюмень (3452)66-21-18  
Улан-Удэ (3012)59-97-51  
Ульяновск (8422)24-23-59  
Уфа (347)229-48-12  
Хабаровск (4212)92-98-04  
Чебоксары (8352)28-53-07  
Челябинск (351)202-03-61  
Череповец (8202)49-02-64  
Чита (3022)38-34-83  
Якутск (4112)23-90-97  
Ярославль (4852)69-52-93

Киргизия (996)312-96-26-47

Россия (495)268-04-70

Казахстан (772)734-952-31

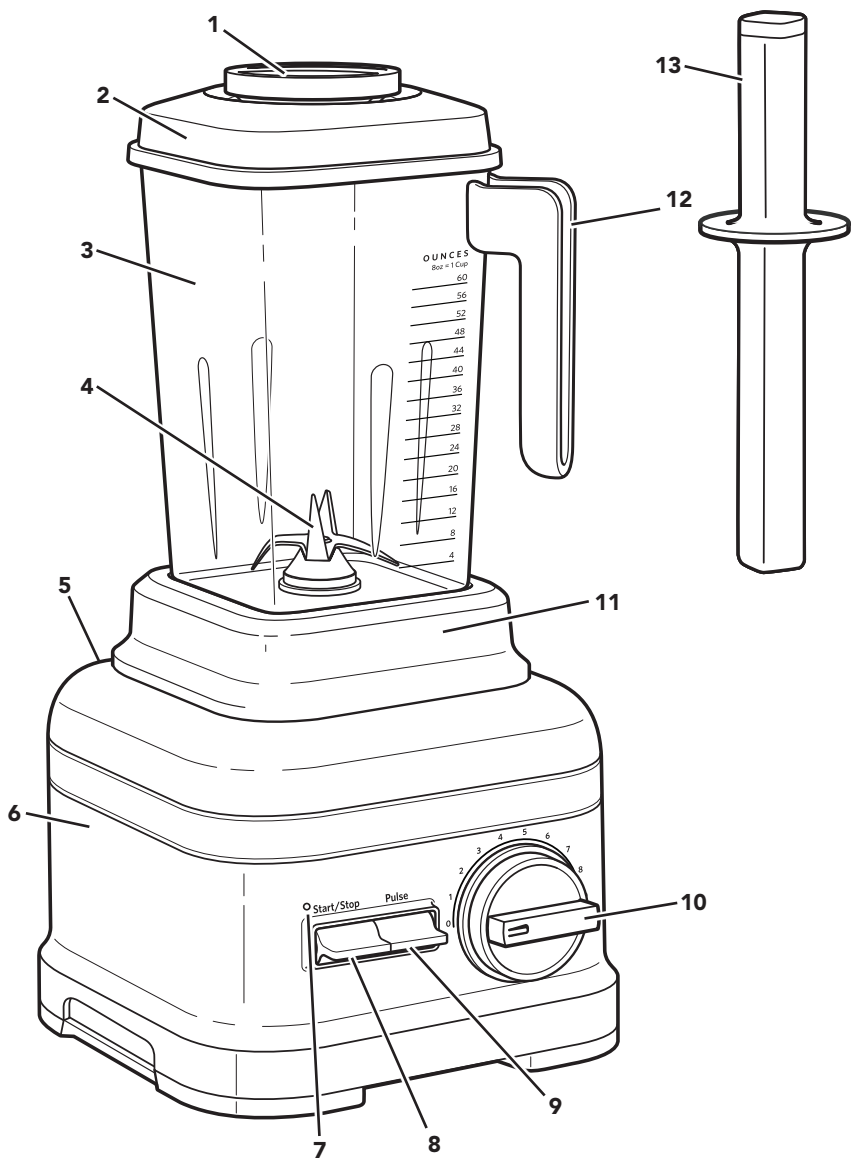
<https://kitchenaid.nt-rt.ru> || [kdi@nt-rt.ru](mailto:kdi@nt-rt.ru)

# Стационарные блендеры HIGH PERFORMANCE

## Stand Blender KSB6060/70



# PARTS AND FEATURES



- |   |                          |    |                          |
|---|--------------------------|----|--------------------------|
| 1 | Ingredient-measuring Cap | 8  | Start/Stop Toggle Switch |
| 2 | Lid                      | 9  | Pulse Toggle Switch      |
| 3 | Blender Jar              | 10 | Control Dial             |
| 4 | Blade                    | 11 | Removable Bender Jar Pad |
| 5 | Power Cord (not shown)   | 12 | Jar Handle               |
| 6 | Base                     | 13 | Tamper                   |
| 7 | Status Indicator Light   |    |                          |

\*Recipe books not shown. Available on select models.

# PRODUCT SAFETY

## Your safety and the safety of others are very important.

We have provided many important safety messages in this manual and on your appliance. Always read and obey all safety messages.



This is the safety alert symbol.

This symbol alerts you to potential hazards that can kill or hurt you and others.

All safety messages will follow the safety alert symbol and either the word “DANGER” or “WARNING.” These words mean:



**You can be killed or seriously injured if you don't immediately follow instructions.**



**You can be killed or seriously injured if you don't follow instructions.**

All safety messages will tell you what the potential hazard is, tell you how to reduce the chance of injury, and tell you what can happen if the instructions are not followed.

## IMPORTANT SAFEGUARDS

**When using electrical appliances, basic safety precautions should always be followed, including the following:**

1. Read all instructions.
2. To protect against risk of electrical shock do not put Stand Blender base in water or other liquid.
3. This appliance is not intended for use by persons (including children) with reduced physical, sensory, or mental capabilities, or lack of experience and knowledge, unless they are closely supervised and instructed concerning use of the appliance by a person responsible for their safety. Close supervision is necessary when any appliance is used by or near children. Children should be supervised to ensure that they do not play with the appliance.
4. Turn the appliance to “0” (OFF) then unplug from the outlet when not in use, before assembling or disassembling parts and before cleaning. To unplug, grasp the plug and pull from the outlet. Never pull from the Power Cord.
5. Avoid contacting moving parts.
6. Do not operate any appliance with a damaged cord or plug, or after the appliance malfunctions, or is dropped or damaged in any manner. Return appliance to the nearest Authorized Service Facility for examination, repair, or electrical or mechanical adjustment.
7. Do not use outdoors.
8. Do not let cord hang over edge of table or counter, or touch hot surfaces.
9. Do not place on or near a hot gas or electric burner, or in a heated oven.
10. Keep hands and utensils, other than the tamper provided, out of the container while blending to reduce the risk of severe injury to persons or damage to the blender. The cover must remain in place when using the tamper through the cover opening. A scraper may be used but must be used only when the blender is not running.

## PRODUCT SAFETY

11. Avoid contacting moving parts. Keep hands, hair, clothing, as well as spatulas and other utensils away from Blade during operation to reduce the risk of injury to persons and/or damage to the Blender.
12. Blades are sharp. Handle carefully.
13. The use of accessories/attachments not recommended or sold by KitchenAid may cause fire, electrical shock or injury.
14. Do not use appliance for other than intended use.
15. Always operate Blender with cover in place.
16. Allow the appliance to cool completely before putting on or taking off parts, and before cleaning the appliance.
17. When blending hot liquids or ingredients or operating in the heating mode, Lid Center Cap should remain in place over the Lid opening. Always start on lowest speed and slowly ramp to desired speed when blending hot liquids or ingredients.

## SAVE THESE INSTRUCTIONS

This product is designed for household use only.

### ELECTRICAL REQUIREMENTS

---

#### **WARNING**



#### **Electrical Shock Hazard**

**Plug into a grounded 3 prong outlet.**

**Do not remove ground prong.**

**Do not use an extension cord.**

**Failure to follow these instructions can result in death, fire, or**

**Voltage:** 120 V~

**Frequency:** 60 Hz

**Intensity (Amp.):** 15 Amps

**NOTE:** If the plug does not fit in the outlet, contact a qualified electrician. Do not modify the plug in any way. Do not use an adapter.

Do not use an extension cord. If the power supply cord is too short, have a qualified electrician or serviceman install an outlet near the appliance.

# PRODUCT SAFETY

## MOTOR HORSEPOWER

Motor horsepower for the blender motor was measured using a dynamometer, a machine that laboratories routinely use to measure the mechanical power of motors. Our 3.0 peak horsepower (HP) motor reference reflects the horsepower output of the motor itself and not the Blender’s horsepower output in the Blender Jar. As with any blender, the power output in the jar is not the same as the horsepower of the motor itself.

## GETTING STARTED

First, clean all parts and accessories (see “Care and Cleaning” section).  
Be sure the countertop beneath the Blender and surrounding areas are dry and clean.

## BLENDER FUNCTION GUIDE

The Blender features Variable Speed and Pulse functions that allow you to customize your blending for any recipe. We encourage you to experiment to find the best speed for your favorite recipes.

SETTING	DESCRIPTION	SUGGESTED ITEMS TO BLEND	
Pulse	Allows precise control of the duration and frequency of blending.	Savory crumb topping, Sweet crumb topping, Meat salad for sandwich filling	Chopped fruits, Chopped vegetables, Ice crush
Variable speeds	Offers ultimate control of the blender.	Fruits, Vegetables, Nuts, Dips, Frozen desserts	Soups, Sauces, Doughs, Butters
Max	In Max speed, the Blender will run continuously on high until the Start/Stop switch is pressed, or after 6 minutes elapse.	Soups, Purées	Smoothies, Frozen Drinks

# PRODUCT USAGE

## ⚠ WARNING

### Electrical Shock Hazard



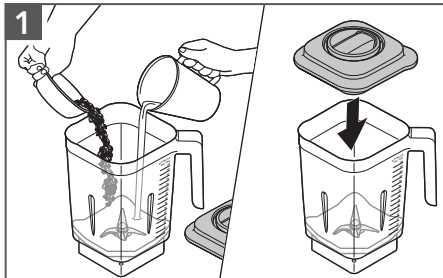
Plug into a grounded 3 prong outlet.

Do not remove ground prong.

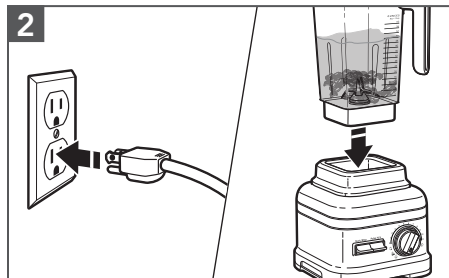
Do not use an adapter.

Do not use an extension cord.

Failure to follow these instructions can result in death, fire, or electrical shock.

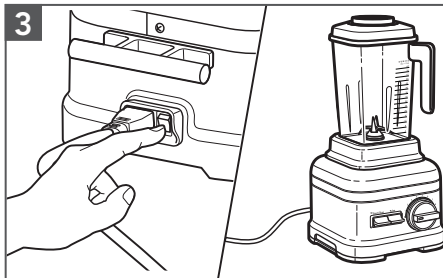


To blend, put the items into the Blender Jar. Secure the Lid with the ingredient measuring cap.

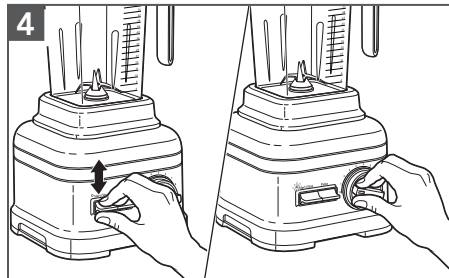


Plug the Blender into a grounded 3-prong outlet. Next, place the Blender Jar on the base, making sure that it is fully aligned on the Jar Pad.

**NOTE:** Do not fill Blender Jar past the topmost measurement mark, especially when blending liquids.

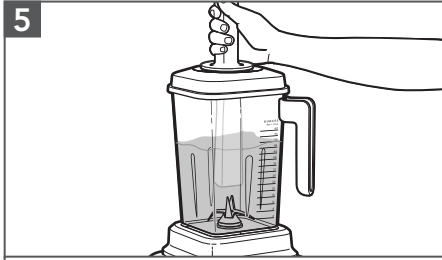


Flip the power switch to ON (I). The Status Indicator Light will flash, indicating that the Blender is in Standby mode and ready to operate.

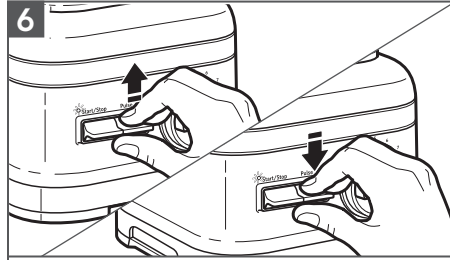


Flip the Start/Stop Toggle Switch up or down to start. The Status Indicator Light will now be solid. Turn the Control Dial to your desired speed. See the "Blender Function Guide" for more details.

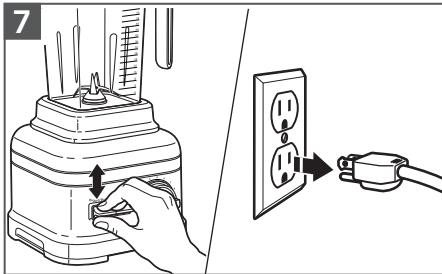
## PRODUCT USAGE



**Using the Tamper:** Remove the Ingredient-measuring Cap only. Stir or press contents down towards the blade. When finished, replace the Ingredient-measuring Cap before resuming blending.



The Pulse function may also be used on its own as a separate blending function while the Blender is in Standby mode.



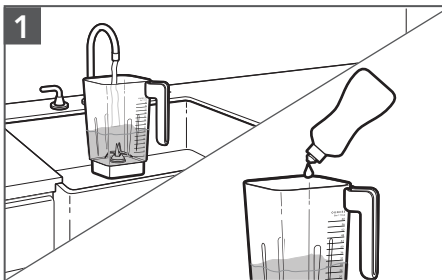
After blending, flip the Start/Stop Toggle Switch up or down to stop. Unplug the Blender before removing Blender Jar.

**NOTE:** Allow the Blender to come to a complete stop before removing the Lid and pouring your blended ingredients.

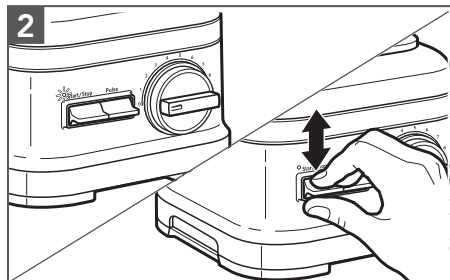
## CARE AND CLEANING

**IMPORTANT:** Allow the appliance to cool completely before putting on or taking off parts, and before cleaning the appliance.

**NOTE:** To avoid damaging the Blender, do not immerse the blender base or cord in water. To avoid scratching, do not use abrasive cleansers or scouring pads.

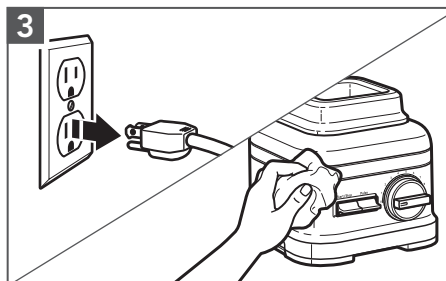


Empty the Blender Jar. Fill jar with 24 oz. of hot water and add 3-4 drops of liquid dishwashing detergent. Place the Lid on the Blender Jar, and make sure the Blender Jar is fully in place on the blender base.

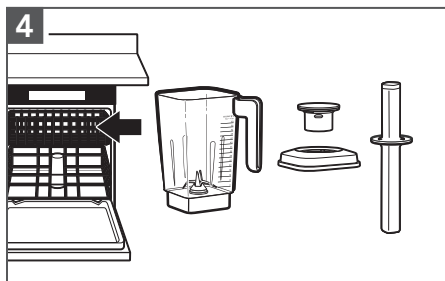


Rotate the Control Dial to Max. Flip the Start/Stop Toggle Switch up or down to start. Run the Blender for 35 seconds. Flip the Start/Stop Toggle Switch up or down to stop. When the blade stops spinning, pour out the soapy water, and rinse the Blender Jar with warm water.

## CARE AND CLEANING



Unplug the Blender before cleaning.  
Wipe the base and the cord with a warm, damp cloth and dry with a soft cloth.



**Dishwasher-safe, top rack only:**  
Lid, Tamper, and Ingredient-measuring Cap.

**Dishwasher-safe, bottom rack only:**  
Blender Jar.

All parts may also be washed by hand with a damp cloth and warm soapy water, and then rinsed with warm water and dried with a soft cloth.

## SANITIZING THE BLENDER

1. Remove any remaining contents from the Blender Jar.
2. Prepare a 200 ppm sodium hypochlorite solution\* using 1.75 L of hot water in the Blender Jar. Place the Lid on the Blender Jar, and make sure the Blender Jar is fully in place on the blender base.
3. Run the Blender on the Max Speed setting for 35 seconds. Flip the Start/Stop Toggle Switch up or down to start the Blender.
4. Turn off the Blender and let the sanitizing mix sit in the Blender Jar for an additional 2 minutes.
5. Pour out the sanitizing solution mix. Do not rinse the Blender Jar.
6. Place the Lid on the Blender Jar. Make sure the empty Blender Jar is fully in place on the blender base. Run the empty Blender for an additional 10 seconds. Do not rinse the jar after sanitizing.
7. Allow the Blender Jar to air dry.

Алматы (7273)495-231  
Ангарск (3955)60-70-56  
Архангельск (8182)63-90-72  
Астрахань (8512)99-46-04  
Барнаул (3852)73-04-60  
Белгород (4722)40-23-64  
Благовещенск (4162)22-76-07  
Брянск (4832)59-03-52  
Владивосток (423)249-28-31  
Владикавказ (8672)28-90-48  
Владимир (4922)49-43-18  
Волгоград (844)278-03-48  
Вологда (8172)26-41-59  
Воронеж (473)204-51-73  
Екатеринбург (343)384-55-89

Ижевск (3412)26-03-58  
Иваново (4932)77-34-06  
Иркутск (395)279-98-46  
Казань (843)206-01-48  
Калининград (4012)72-03-81  
Калуга (4842)92-23-57  
Кемерово (3842)65-04-62  
Киров (8332)68-02-04  
Коломна (4966)23-41-49  
Кострома (4942)77-07-48  
Курск (4712)77-13-04  
Курган (3522)50-90-47  
Липецк (4742)52-20-81

Магнитогорск (3519)55-03-13  
Москва (495)268-04-70  
Мурманск (8152)59-64-93  
Набережные Челны (8552)20-53-41  
Нижний Новгород (831)429-06-12  
Новокузнецк (3843)20-46-81  
Новыйбурск (3496)41-32-12  
Новосибирск (383)227-86-73  
Новыйбурск (3496)41-32-12  
Омск (3812)21-46-40  
Орел (4862)44-53-42  
Оренбург (3533)37-68-04  
Пенза (8412)22-31-16  
Петрозаводск (8142)55-98-37  
Псков (8112)59-10-37

Пермь (342)205-81-47  
Ростов-на-Дону (863)308-18-15  
Рязань (4912)46-61-64  
Самара (846)206-03-16  
Саранск (8342)22-98-24  
Санкт-Петербург (812)309-46-40  
Саратов (845)249-38-78  
Севастополь (8692)22-31-93  
Симферополь (3652)67-13-56  
Смоленск (4812)29-41-54  
Сочи (862)225-72-31  
Ставрополь (8652)20-65-13  
Сыктывкар (8212)25-95-17  
Сургут (3462)77-98-35  
Тамбов (4752)50-40-97

Тверь (4822)63-31-35  
Тольятти (8482)63-91-07  
Томск (3822)98-41-53  
Тула (4872)33-78-87  
Тюмень (3452)66-21-18  
Улан-Удэ (3012)59-97-51  
Ульяновск (8422)24-23-59  
Уфа (347)229-48-12  
Хабаровск (4212)92-98-04  
Чебоксары (8352)28-53-07  
Челябинск (351)202-03-61  
Череповец (8202)49-02-64  
Чита (3022)38-34-83  
Якутск (4112)23-90-97  
Ярославль (4852)69-52-93

Киргизия (996)312-96-26-47

Россия (495)268-04-70

Казахстан (772)734-952-31